

NASELLE YOUTH CAMP (NYC)

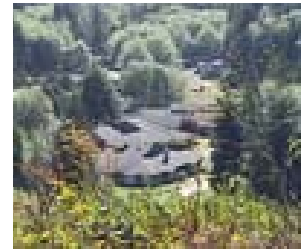
PACIFIC COUNTY ECONOMIC DEVELOPMENT COUNCIL FACTSHEET

September 2011

Pacific County's sixth largest employer, Naselle Youth Camp will close by June 30, 2012.

Senator Doumit said in 2003 "The NYC fulfills a very important, as well as unique, role in our community and in our state. It is the sole institution that is a work camp, and it provides a work experience for the youth inmates."

NYC is Washington's only medium security institution and a step-down institution for youth from maximum security facilities as residents transition back into the community.



Aerial of Naselle Youth Camp

Opened 10/17/66 Naselle Youth Camp remains today in excellent condition with new living units, on-site medical and dental facilities, classroom and new administration offices.

Unemployment Rate—August 2011

10.9%

Labor Force—August 2011

9,120

Pacific County's Estimated Impact from 100 jobs lost through closure:

Unemployment Rate 12% - Labor Force 9,022

NYC Supports

98 jobs—With benefits, and above the Pacific County average wage of \$12.44

Of which approximately 60 have over 10 years of state service.

~\$3.4 million in annual salaries

~\$74,700 in medical services annually within 35 miles

~\$27,800 in Goods & Services annually within 35 miles

14 staff Naselle-Grays River Valley School District

100% Live within 30 miles

83% Purchasing or Own Homes

Training Hours to Staff: ~4500

Facility Capacity: 149

Residential living units: 4

Medical Facility

Dental Facility

Economic Impacts

An estimated loss of **98 jobs**, represent a payroll of **\$3.4 million**

An estimated loss of **\$87,500** to County schools

Loss to DNR for services in the amount of **\$200,000** for the planting of 350,000 trees, pre-commercial thinning, plantation maintenance and wildfire fighting

Loss of community benefits to charitable organizations in excess of **\$10,000**

Experience a decline in school enrollment, employment, hospitals and other community services

Negative impacts to property values with excessive number of homes added to the market

Cuts to the Naselle Youth Camp will threaten not just employment and incomes, but the very sustainability of our county.

Partnerships:

Pacific County Commissioners
Pacific County Sheriff's Dept.
Naselle School District
Washington State Patrol
U.S. Coast Guard
Dept. of Fish & Wildlife
Dept. of Natural Resources

"Any job cuts would not only cripple the staff, families, community, school district, small businesses, close our trout hatchery, but it would cheat our troubled youth out of a very special opportunity to learn a trade." RL-Naselle

Please show your support by writing your Governor and legislators on the value Naselle Youth Camp represents to your community and county. During these negotiations between the House and Senate, please take a moment and write to
your representatives

Sample:

Dear Speaker Chopp, Representative Sullivan, Senator Murray, and Representative Kilmer:

I personally would like to take this opportunity to thank you for your leadership in working to ensure that the final budget includes funding for the Naselle Youth Camp and I urge you to work with other House and Senate leaders to maintain this important facility as negotiations progress. The closure of Naselle Youth Camp would be devastating to Pacific County with the loss of over 100 jobs. Not only the loss of jobs with annual salaries equaling approximately \$3.4 million, but loss to DNR for services in the amount of \$200,000, Loss of community benefits to charitable organizations in excess of \$10,000 and negative impacts to property values with an excessive number of homes added to the market.

In an already economically depressed county, we ask you to support Naselle Youth Camp to remain open.

Contacts:

Legislative Hotline: 800-562-6000

	E-Mail	Address
Gov. Gregoire	(FAX) 360-753-4110	PO Box 40002, Olympia, WA 98504-0002
Lt. Gov. Brad Owens	<i>Owen.brad@leg.wa.gov</i>	PO Box 40400, Olympia, WA 98504-0400
Sen. Brian Hatfield	<i>hatfield.brian@leg.wa.gov</i>	PO Box 40419, Olympia, WA 98504-0419
Rep. Brian Blake	<i>blake.brian@leg.wa.gov</i>	PO Box 40600, Olympia, WA 98504-0600
Rep. Dean Takko	<i>takko.dean@leg.wa.gov</i>	PO Box 40600, Olympia, WA 98504-0600
Speaker Frank Chopp	<i>chopp.frank@leg.wa.gov</i>	PO Box 40600, Olympia, WA 98504-0600
Representative Sullivan	<i>pat.sullivan@leg.wa.gov</i>	PO Box 40600, Olympia, WA 98504-0600
Rep. Ross Hunter, Chair House Ways & Means Committee	<i>ross.hunter@leg.wa.gov</i>	PO Box 40600, Olympia, WA 98504-0600
Rep. Jeannie Darneille, Vice-Chair House Ways & Means Committee	<i>jeannie.darneille@leg.wa.gov</i>	PO Box 40600, Olympia, WA 98504-0600
Sen. Ed Murray, Chair Senate Ways & Means Committee	<i>edward.murray@leg.wa.gov</i>	PO Box 40411, Olympia, WA 98504-0411
Sen. Derek Kilmer, Vice-Chair Senate Ways & Means Committee	<i>derek.kilmer@leg.wa.gov</i>	PO Box 40448, Olympia, WA 98504-0448