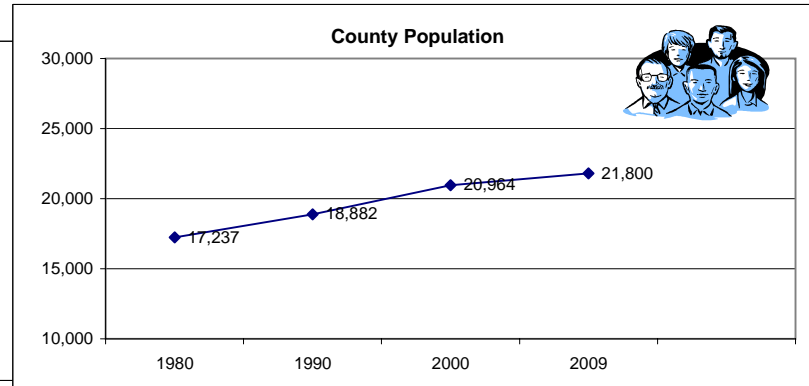
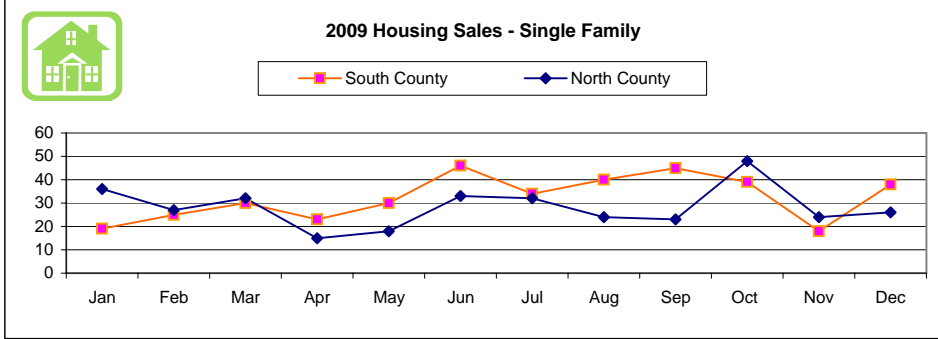


**Economic Development Indicators  
Pacific County  
December 2009  
COUNTY WIDE INDICATORS**

**HOUSING SALES - Single Family Housing - County Assessor's Office**



Source: US Census Bureau (2009 population: estimate only)

**Pacific County Building Permits Issued**

	Jan	Feb	Mar	Apr	May	Jun	Jul	Aug	Sep	Oct	Nov	Dec		
<b>2006</b>	31	24	35	49	50	40	49	64	37	37	37	31	<b>484</b>	<b>Total</b>
<b>2007</b>	25	13	39	41	53	55	41	43	42	63	19	18	<b>452</b>	<b>Total</b>
<b>2008</b>	46	19	31	53	45	46	58	33	38	42	30	24	<b>465</b>	<b>Total</b>
<b>2009</b>	14	14	20	29	26	42	40	34	31	41	13	24	<b>328</b>	<b>YTD</b>

**New Business Licenses Issued - December**

	Raymond	South Bend	Ilwaco	Long Beach	YTD
<b>2008</b>	0	10	0	18	<b>50</b>
<b>2009</b>	1	12	0	29	<b>50</b>

**New P.U.D. Services**

	Jan	Feb	Mar	Apr	May	Jun	Jul	Aug	Sep	Oct	Nov	Dec	YTD
'08 North	3	6	4	4	7	3	2	4	1	0	12	3	49
'08 South	20	10	10	18	14	12	16	13	8	8	10	10	149
<b>'08 Total</b>	<b>23</b>	<b>16</b>	<b>14</b>	<b>22</b>	<b>21</b>	<b>15</b>	<b>18</b>	<b>17</b>	<b>9</b>	<b>8</b>	<b>22</b>	<b>13</b>	<b>198</b>
'09 North	3	4	4	2	1	34	0	3	1	2	1	0	55
'09 South	4	3	4	9	6	11	12	7	7	6	3	6	78
<b>'09 Total</b>	<b>7</b>	<b>7</b>	<b>8</b>	<b>11</b>	<b>7</b>	<b>45</b>	<b>12</b>	<b>10</b>	<b>8</b>	<b>8</b>	<b>4</b>	<b>6</b>	<b>133</b>

\* not available at time of printing

**Economic Development Indicators  
Pacific County  
December 2009**

**PACIFIC COUNTY WORKFORCE**

**Area Residence**

Year	Works in Pacific County	Works Out of Pacific
1982	5,245	868
1990	5,800	804
2000	6,511	1,374
% Inc.	24.13%	58.30%

Source: US Census Bureau

**Labor Force**

Year	Persons 16 Over	In Labor Force	Not in Labor Force
1990	14,858	7,442	7,416
2000	17,073	8,722	8,351
% Inc.	14.90%	17.19%	12.60%

Source: US Census Bureau

**Education**

Year	Persons 25+	Less than 9th Grade	9th-12th, no diploma	High School Grad	Some College, no degree	Assoc. Degree	Bachelor Degree	Grad. Or Prof. Degree
1990	13,227	9.4%	16.4%	37.4%	20.1%	5.4%	8.5%	2.8%
2000	15,298	6.6%	14.5%	31.4%	26.6%	5.8%	9.1%	6.1%

Source: US Census Bureau

**High School Students and Graduates**

2006	Ilwaco Alt.	Ilwaco	Naselle	Raymond	S. Bend	Valley	Total
Freshmen	7	116	31	41	51	39	285
Soph.	14	94	24	46	51	43	272
Juniors	1	67	45	48	39	22	222
Seniors	8	67	23	59	41	41	239
Graduates 2005	9	62	19	33	36	32	191
Ann. Dropout '06-'07	36.4%	5.2%	3.8%	4.7%	4.4%	2.4%	
Ext. Grad. Rate '06-'07	20.9%	80.7%	85.1%	99.6%	82.9%	92.5%	

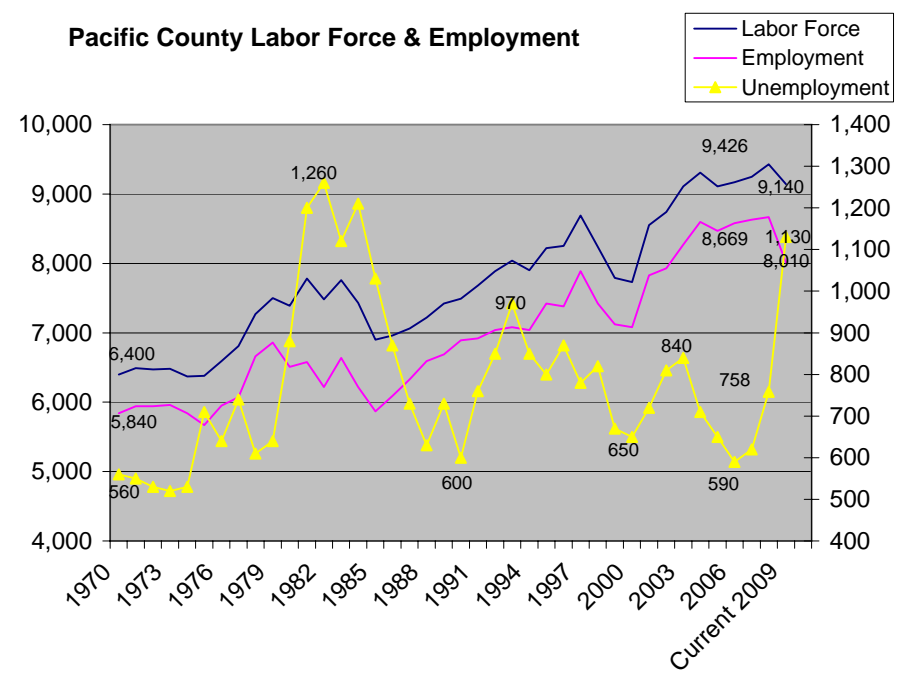
Source: Individual Schools and Office of Superintendent of Public Instruction

**Persons 25+ with Less than High School Diploma**

Year	Percentage
1990	25.80%
2000	21.10%

Source: US Census Bureau

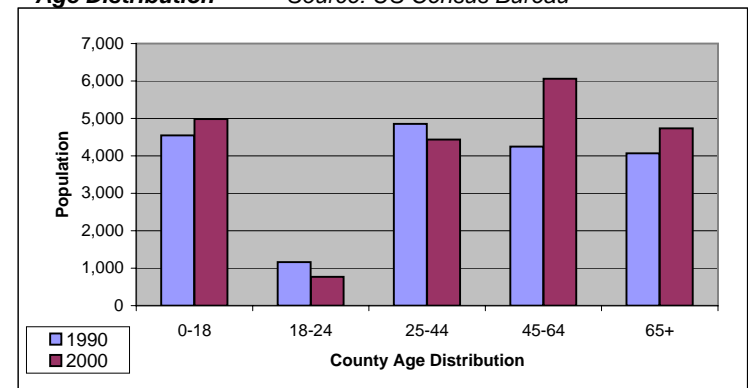
**Pacific County Labor Force & Employment**



Source: WA Employment Security Dept.

**Age Distribution**

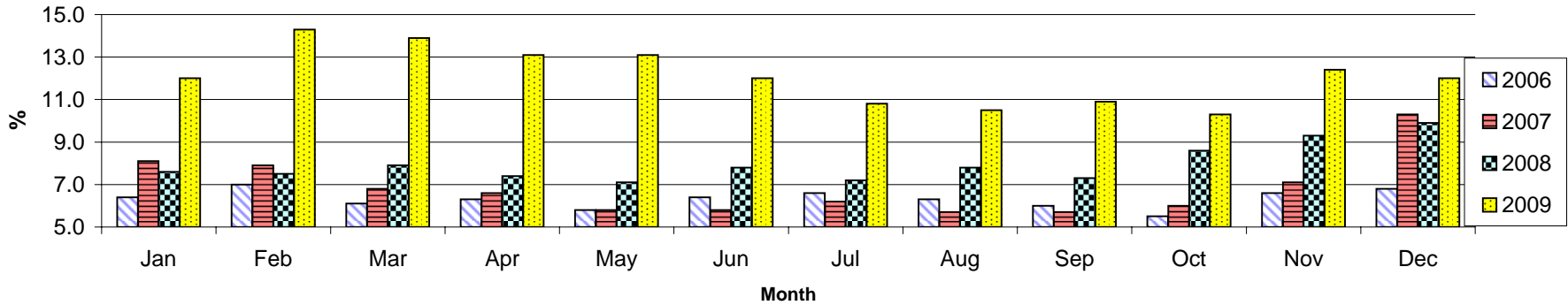
Source: US Census Bureau



Economic Development Indicators  
Pacific County  
December 2009

Pacific County Unemployment Percentage Rates

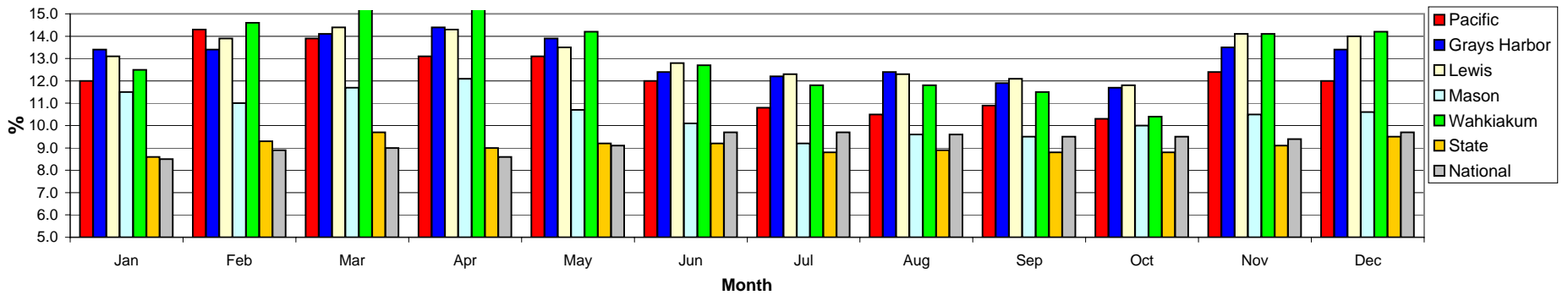
Pacific County  
Unemployment Percentage Rates 2006-2009



Unemployment Percentage Rates - Not Seasonally Adjusted

2009	Jan	Feb	Mar	Apr	May	Jun	Jul	Aug	Sep	Oct	Nov	Dec
<b>Pacific</b>	12.0	14.3	13.9	13.1	13.1	12.0	10.8	10.5	10.9	10.3	12.4	12.0
<b>Grays Harbor</b>	13.4	13.4	14.1	14.4	13.9	12.4	12.2	12.4	11.9	11.7	13.5	13.4
<b>Lewis</b>	13.1	13.9	14.4	14.3	13.5	12.8	12.3	12.3	12.1	11.8	14.1	14.0
<b>Mason</b>	11.5	11.0	11.7	12.1	10.7	10.1	9.2	9.6	9.5	10.0	10.5	10.6
<b>Wahkiakum</b>	12.5	14.6	15.2	15.5	14.2	12.7	11.8	11.8	11.5	10.4	14.1	14.2
<b>State</b>	8.6	9.3	9.7	9.0	9.2	9.2	8.8	8.9	8.8	8.8	9.1	9.5
<b>National</b>	8.5	8.9	9.0	8.6	9.1	9.7	9.7	9.6	9.5	9.5	9.4	9.7

5 County Region  
Unemployment Percentage Rates  
2009



\* not available at time of printing

Economic Development Indicators  
Pacific County  
December 2009

**Washington State Unemployment Percentage Rates - Seasonally Adjusted**

	Jan	Feb	Mar	Apr	May	Jun	Jul	Aug	Sep	Oct	Nov	Dec
2007	5.1	4.8	4.6	4.4	4.6	4.5	5.0	4.6	4.8	4.8	4.6	4.8
2008	4.5	4.5	4.9	4.7	5.3	5.5	5.7	6.0	5.8	6.3	6.4	7.1
2009	7.8	8.4	9.7	9.1	9.4	9.3	9.1	9.2	9.3	9.3	8.4	9.5

**National Unemployment Percentage Rates - Seasonally Adjusted**

	Jan	Feb	Mar	Apr	May	Jun	Jul	Aug	Sep	Oct	Nov	Dec
2007	4.6	4.5	4.4	4.5	4.5	4.5	4.6	4.6	4.7	4.7	4.7	5.0
2008	4.9	4.8	5.1	5	5.5	5.5	5.7	6.1	6.1	6.5	6.7	7.2
2009	7.6	8.1	8.5	8.9	9.4	9.5	9.4	9.7	9.8	10.2	10.0	10

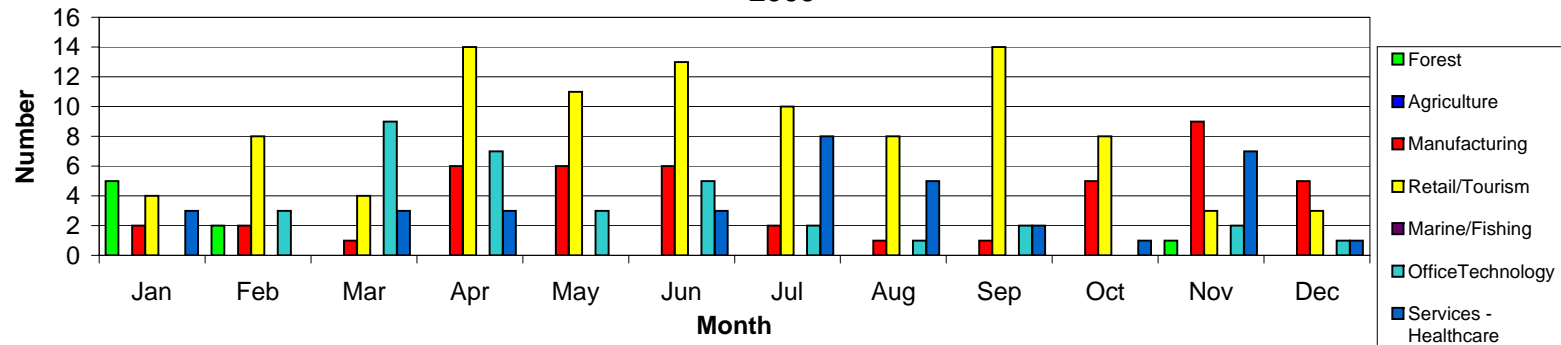
Source: www.workforceexplorer.com (data-labor force)

**B2B -- Job Seekers Hired**

2009	Jan	Feb	Mar	Apr	May	Jun	Jul	Aug	Sep	Oct	Nov	Dec	Total
Forest	5	2									1	0	8
Agriculture												0	0
Manufacturing	2	2	1	6	6	6	2	1	1	5	9	3	46
Retail/Tourism	4	8	4	14	11	13	10	8	14	8	3	3	100
Marine/Fishing												0	0
OfficeTechnology		3	9	7	3	5	2	1	2		2	1	35
Services - Healthcare	3		3	3		3	8	5	2	1	7	1	36

Source: WorkSource Pacific County

**Business to Business  
Job Seekers Hired by Cluster  
2009**



\* not available at time of printing

**Economic Development Indicators  
Pacific County  
December 2009**

**TOTAL EMPLOYED BY INDUSTRY in 2000**

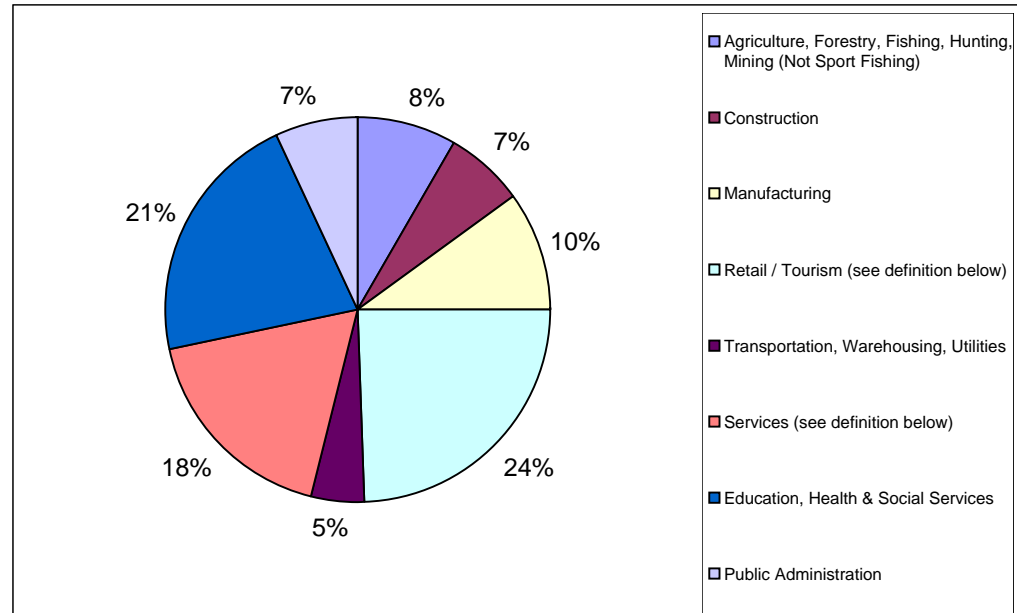
<b>INDUSTRY</b>	<b># Emp.</b>	<b>Percent</b>
<i>Total Employed 2000</i>	7,989	100
<b>Agriculture, Forestry, Fishing, Hunting, Mining (Not Sport Fishing)</b>	<b>663</b>	<b>8.3</b>
Construction	545	6.8
<b>Manufacturing</b>	<b>789</b>	<b>9.9</b>
<b>Retail / Tourism (see definition below)</b>	<b>1957</b>	<b>24.5</b>
Transportation, Warehousing, Utilities	360	4.5
<b>Services (see definition below)</b>	<b>1422</b>	<b>17.8</b>
<b>Education, Health &amp; Social Services</b>	<b>1,699</b>	<b>21.3</b>
Public Administration	554	6.9

Source: US Census Bureau

**Retail / Tourism:** Retail, Wholesale, Sportfishing, Arts & Entertainment

**Services:** Professional, Scientific, Management, Admin., Information, Waste Management Services, Finance, Insurance, Real Estate, and Other

Source: US Census Bureau 2000



**RETAIL / TOURISM**

**Quarterly Taxable Retail Sales**

	<b>1st</b>	<b>2nd</b>	<b>3rd</b>	<b>4th</b>	<b>Total</b>
<b>2005</b>	\$35,714,081	\$45,832,566	\$61,130,529	\$47,737,580	<b>\$190,414,756</b>
<b>2006</b>	\$42,498,177	\$48,266,465	\$58,644,253	\$46,641,337	<b>\$196,050,232</b>
<b>2007</b>	\$39,610,179	\$53,627,111	\$71,883,917	\$55,571,599	<b>\$220,692,806</b>
<b>2008</b>	\$53,177,950	\$59,075,423	\$68,900,819	\$52,379,485	<b>\$233,533,677</b>
<b>2009</b>	\$43,030,061	\$47,526,645	\$63,381,498	\$46,501,948	<b>\$200,440,152</b>

Source: Dept of Revenue [www.dor.wa.gov/docs/reports](http://www.dor.wa.gov/docs/reports)

**NOTE:** In 2008 new procedures were adopted to standardize how tourism agencies reported numbers. This accounts for the difference between 2007-2008.

**Long Beach Visitor's Bureau** (Total drop-ins, phone calls & Web hits)

	<b>Jan</b>	<b>Feb</b>	<b>Mar</b>	<b>Apr</b>	<b>May</b>	<b>Jun</b>	<b>Jul</b>	<b>Aug</b>	<b>Sep</b>	<b>Oct</b>	<b>Nov</b>	<b>Dec</b>	<b>Total</b>
<b>2008</b>	15,101	15,304	18,782	17,598	21,175	12,903	49,781	48,809	28,789	22,907	18,627	3,338	273,114
<b>2009</b>	25,175	20,604	32,665	30,624	37,980	44,037	55,052	46,293	31,373	14,916	23,198	21,039	382,956

**Willapa Harbor Chamber of Commerce** (Total drop-ins, phone calls & Web hits)

	<b>Jan</b>	<b>Feb</b>	<b>Mar</b>	<b>Apr</b>	<b>May</b>	<b>Jun</b>	<b>Jul</b>	<b>Aug</b>	<b>Sep</b>	<b>Oct</b>	<b>Nov</b>	<b>Dec</b>	<b>Total</b>
<b>2008</b>	18,465	9,302	9,173	9,399	10,472	8,197	8,799	8,953	6,680	5,868	7,051	6,077	108,436
<b>2009</b>	6,734	6,432	5,701	6,994	7,963	8,357	8,345	9,310	8,903	7,888	6,762	6,353	89,742

\*\*home page hits not available